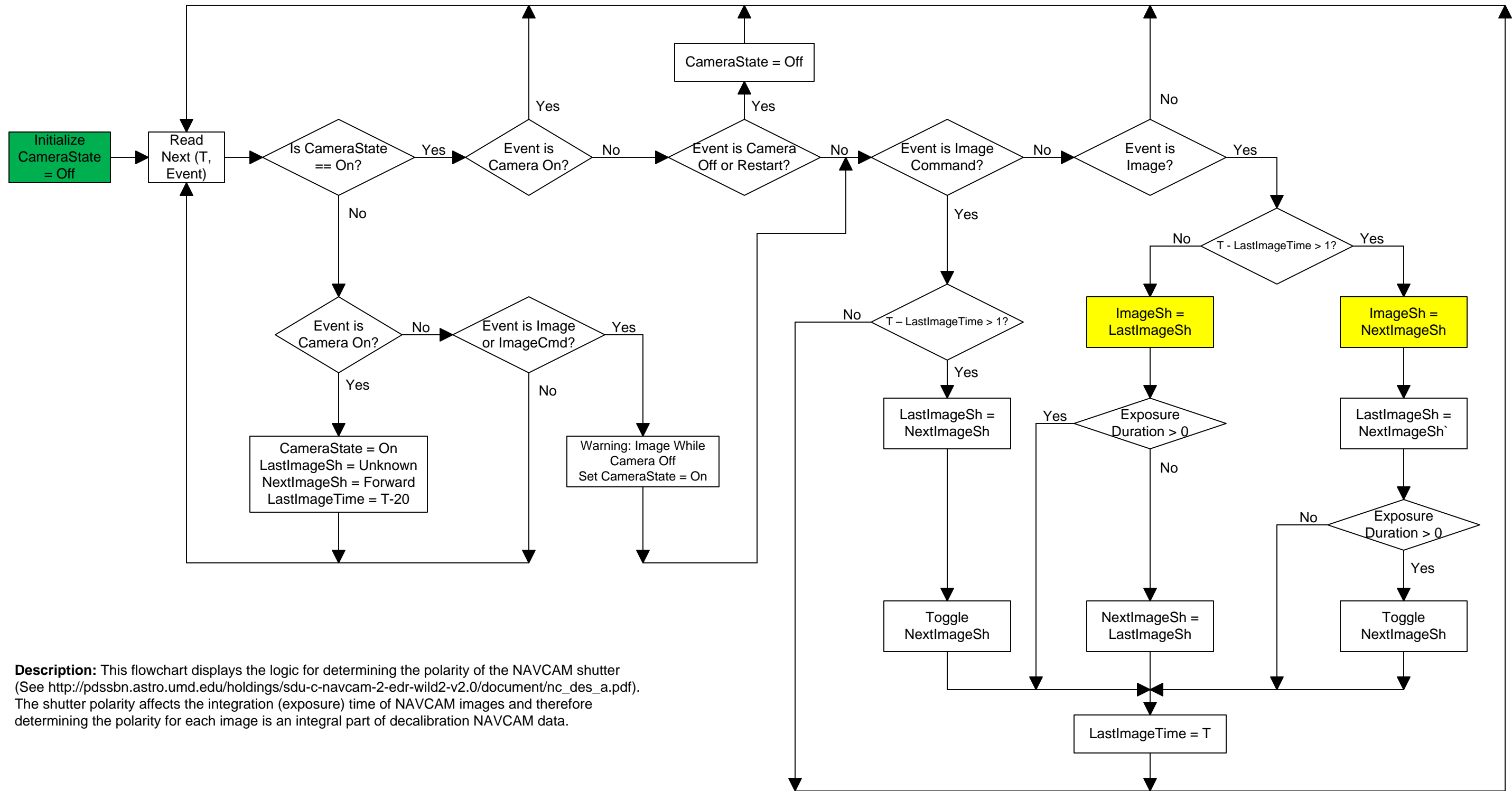


Logic for Determining STARDUST/Next NAVCAM Shutter Polarity in Support of Image Decalibration

2/25/11



Description: This flowchart displays the logic for determining the polarity of the NAVCAM shutter (See http://pdssbn.astro.umd.edu/holdings/sdu-c-navcam-2-edr-wild2-v2.0/document/nc_des_a.pdf). The shutter polarity affects the integration (exposure) time of NAVCAM images and therefore determining the polarity for each image is an integral part of decalibration NAVCAM data.

Legend: Sh => - Shutter Polarity (Forward, Backward or Unknown)
 - Shutter Polarity toggles between Forward and Backward
 - Shutter Polarity is assigned to a downlinked image in the yellow boxes and used for image decalibration

T => Time of current event (i.e. last event read)

Drawn By: Phil Carcich
 Engineering Associate
 Avery Dennison
 LPM Process Technology Group